

# SCSH Townhall Meeting

## North Indio Stormwater Flood Control Project Status and Plans

Christopher Stevens, Chair

Ad Hoc Advisory Committee

North Indio Stormwater Flood Control Project

July 8, 2021

# SCSH Ad Hoc Advisory Committee

## CVWD North Indio Regional Stormwater Flood Control Channel

- ▶ Discussion Topics:
  - ▶ Ad Hoc Advisory Committee Charter and Membership
  - ▶ Overview of CVWD North Indio Stormwater Flood Control Project
  - ▶ Committee interactions with CVWD regarding the project design
  - ▶ CVWD design for work in the SCSH North Channel
  - ▶ Project Schedule estimate
  - ▶ Hermann Design Group Landscape Replacement Plan
  - ▶ Equipment Access to North Pond for sand/silt and debris removal
  - ▶ Proposed Future Actions

# SCSH Ad Hoc Advisory Committee (12/7/19)

## Charter

### CVWD North Indio Regional Stormwater Flood Control Channel

#### ► Purpose:

- Develop a plan and advise the Board on what to request during negotiation with CVWD to minimize the water damage & cost as a result of drainage water entering and running through the North Channel through the golf course.
- Review the detailed design and implementation approach for the construction as it is developed and advise the Board of potential adverse impacts on the SCSH in-place assets.
- Develop a list of recommended mitigations to be proposed by the Board for inclusion in the CVWD construction plans.
- Develop concepts for consideration by the Board to mitigate impact of stormwater flows below Pond 1.

# SCSH Ad Hoc Advisory Committee (12/7/19)

## CVWD North Indio Regional Stormwater Flood Control Channel

### ► Membership:

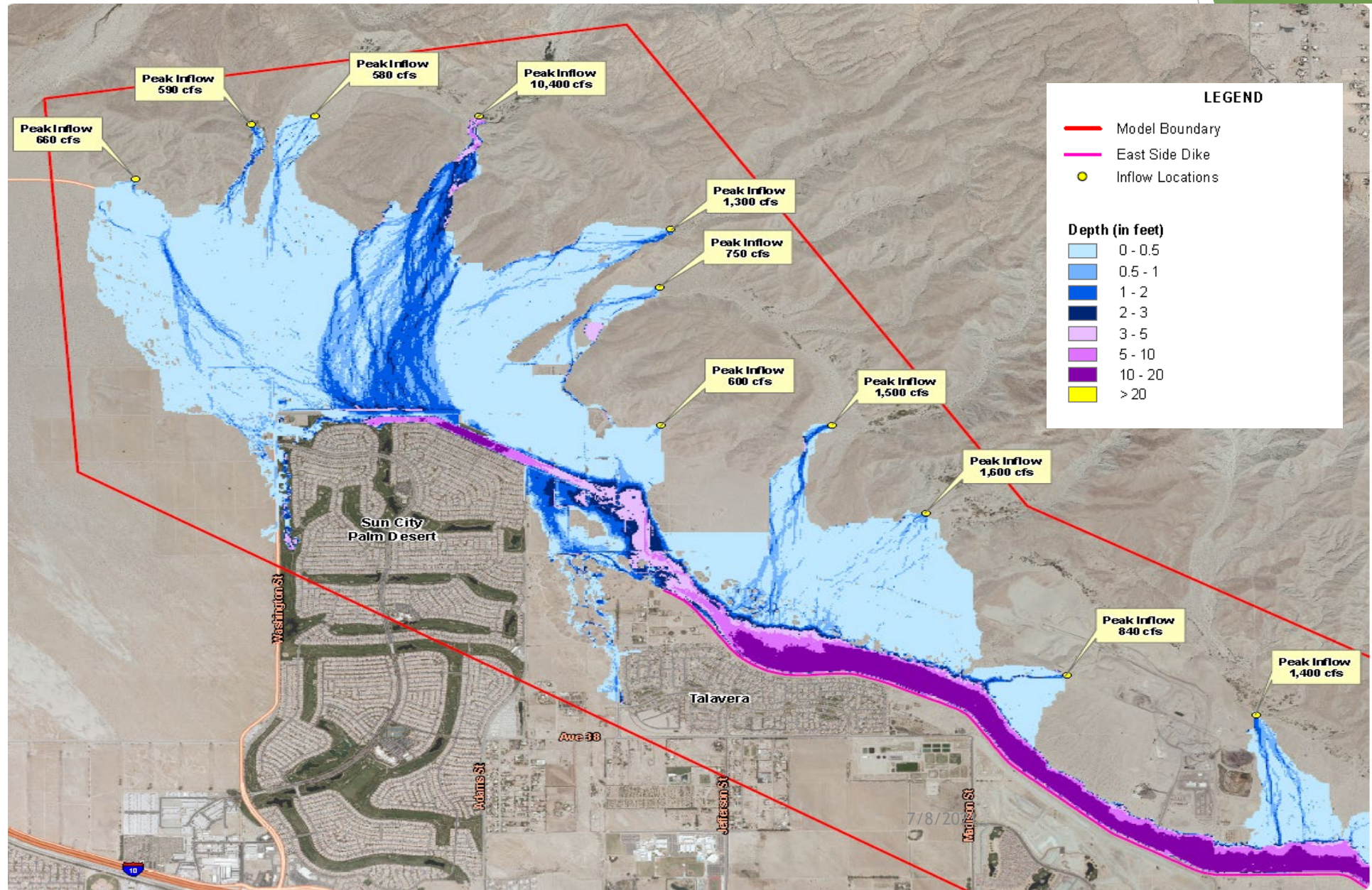
- Chris Stevens, Chair
- Jason Allmon, Troon
- Carol Townsend, Neighborhood Representative
- Rick Ambrose
- Dave Bakshy
- Jesse Barragan, Director of Facilities
- Chris Hermann, Hermann Design Group, Inc.
- Jeff Kirkpatrick, Safety Committee Chair
- Jack Heller, Facilities Committee
- Tyler Ingle, General Manager
- Rolland Vaughan, Troon General Manager

# SCSH Flood Control Project Status and Plans

- ▶ Discussion topics:
  - ▶ Overview of project
  - ▶ Overview of CVWD interactions with SCSH during project planning
  - ▶ Status of the Flood Control Project
  - ▶ CVWD Project Schedule update
  - ▶ CVWD Project Design status
  - ▶ Hermann Design Group Landscape Replacement Plan
  - ▶ Plant Palette for replacement landscaping
  - ▶ Potential future actions



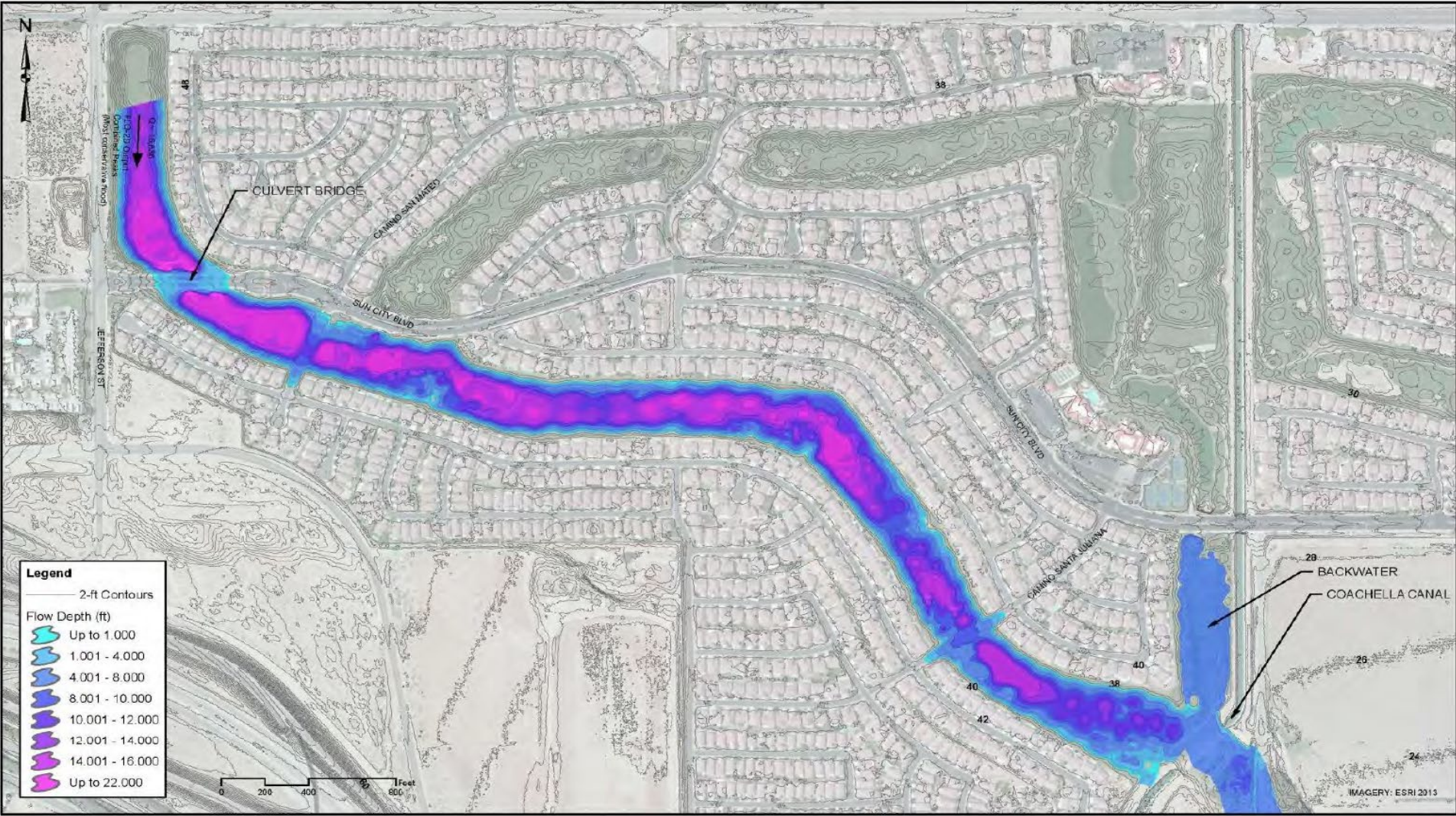
# North Indio Flood Hazards



Data Sources: NAIP Orthorectified Color Aerial Imagery, 2010. County of Riverside Roads, 01/2014.



# Sun City Shadow Hills Channel




SYMBOL	REVISION DESCRIPTION	DATE	APPROVAL

DESIGNED BY:
DRAWN BY:
CHECKED BY:
FILE NAME:
FILE NO:

 Tetra Tech

17885 Von Karman Avenue, Suite 500  
Irvine, CA 92614  
Tel. (949) 809-5000 Fax. (949) 805-5903

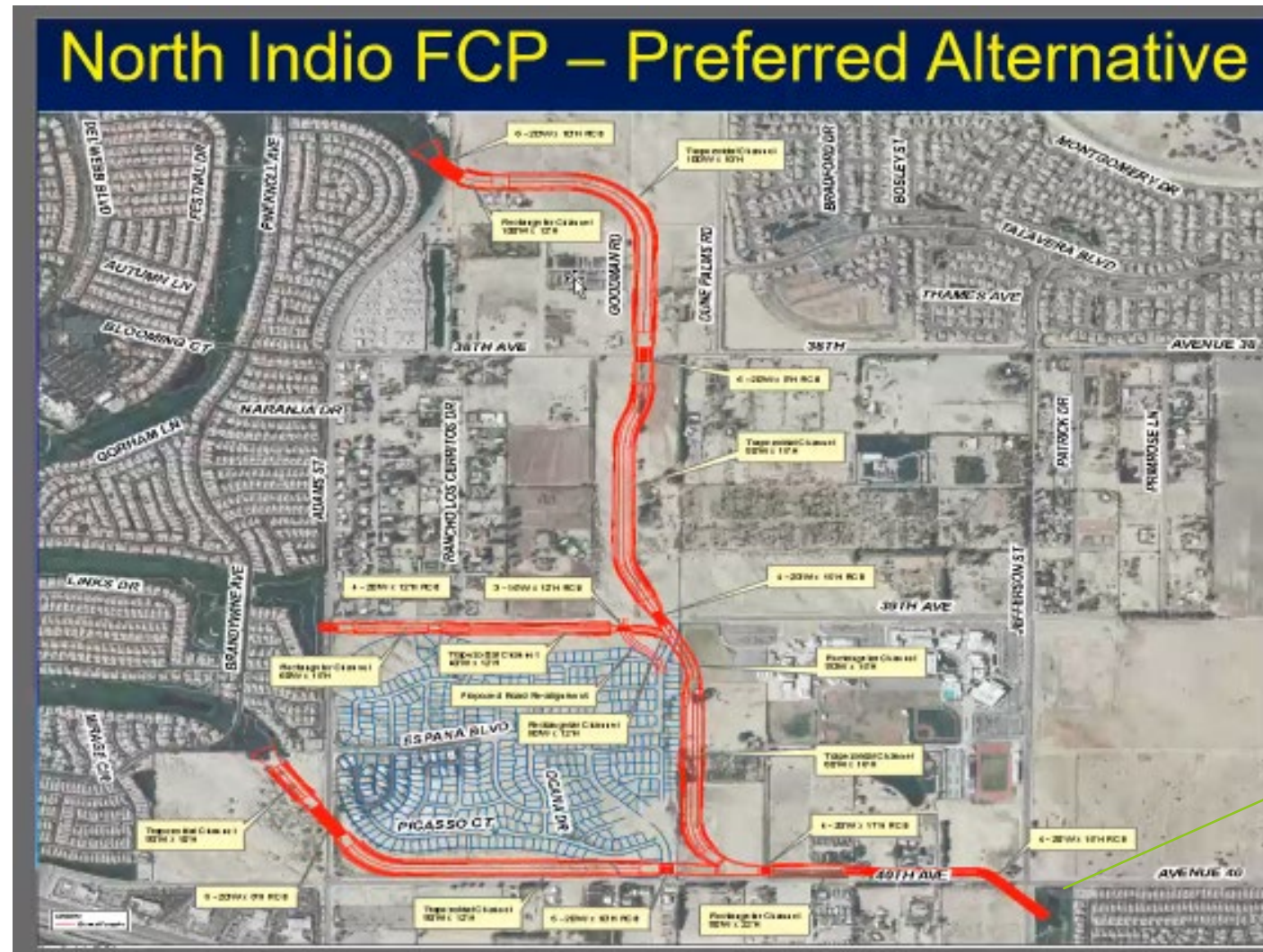
 COACHELLA VALLEY WATER DISTRICT  
COACHELLA VALLEY  
RIVERSIDE COUNTY, CALIFORNIA

SUBMITTED BY:

COACHELLA VALLEY WATER DISTRICT  
NORTH INDI-THOUSAND PALMS  
STORM CHANNEL DESIGN  
Hydraulic Analysis - HEC-RAS



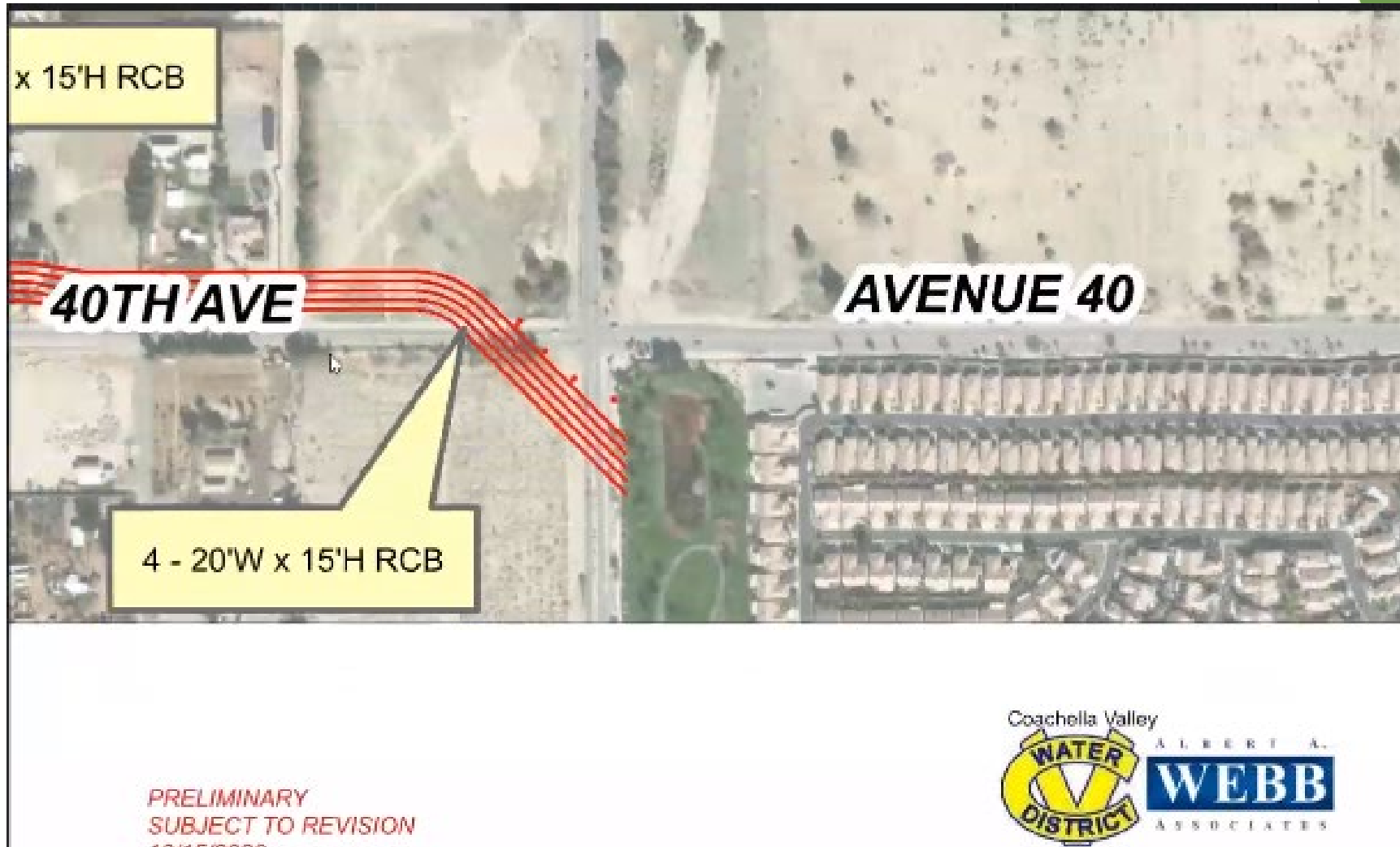
# SCSH Flood Control Project Overview



North Channel



# SCSH Flood Control Project Update



# Box Drains under Adams Street



# Box Drains under Adams Street





# Box Drains under Adams Street





# North Connection Existing Channel Impacts





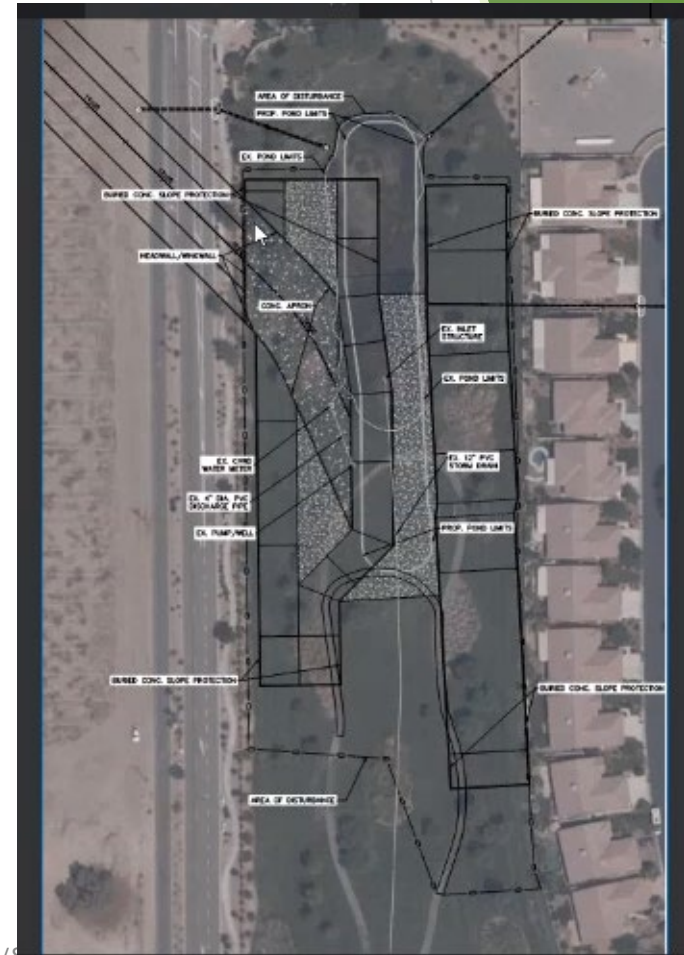
# North Connection Existing Channel Impacts





# SCSH Flood Control Project Overview

- ▶ North pond drain entry and pond modifications
  - ▶ Surface area increased
  - ▶ Depth increased
  - ▶ Pond moved south
  - ▶ Reconstructed with concrete bottom and sides
  - ▶ Existing walkway modified to include path to north end of pond.
  - ▶ Equipment access ramp from Ave.40 to north end of pond (CVWD contract option funded by SCSH).
  - ▶ Access gate from Ave. 40 (CVWD contract option funded by SCSH)



7/8/2021

# SCSH Flood Control Project Schedule Update

- ▶ CVWD Project Schedule as of June 30, 2021
  - ▶ Project bid: mid-April 2021
  - ▶ Pre-bid virtual meeting 4/28/2021
  - ▶ Award contract: July 1, 2021
  - ▶ Start of Construction: mid-to-end of August
  - ▶ When does the project start on our property?
    - ▶ CVWD: “Not sure since it is the contractor’s means and methods; but we anticipate the contractor to start from your property. We will know once we have selected a contractor.”
  - ▶ Worst case estimate of duration in North Channel: 18 months
  - ▶ Total project time on our property and surrounding our property?
    - ▶ CVWD: “This also depends on the contractor, but we would like to make it as short as practicable.”
  - ▶ CVWD completion of North Indio Flood Control Channel: 100% stormwater full-flow capability, approximately 5-7 years.

7/8/2021

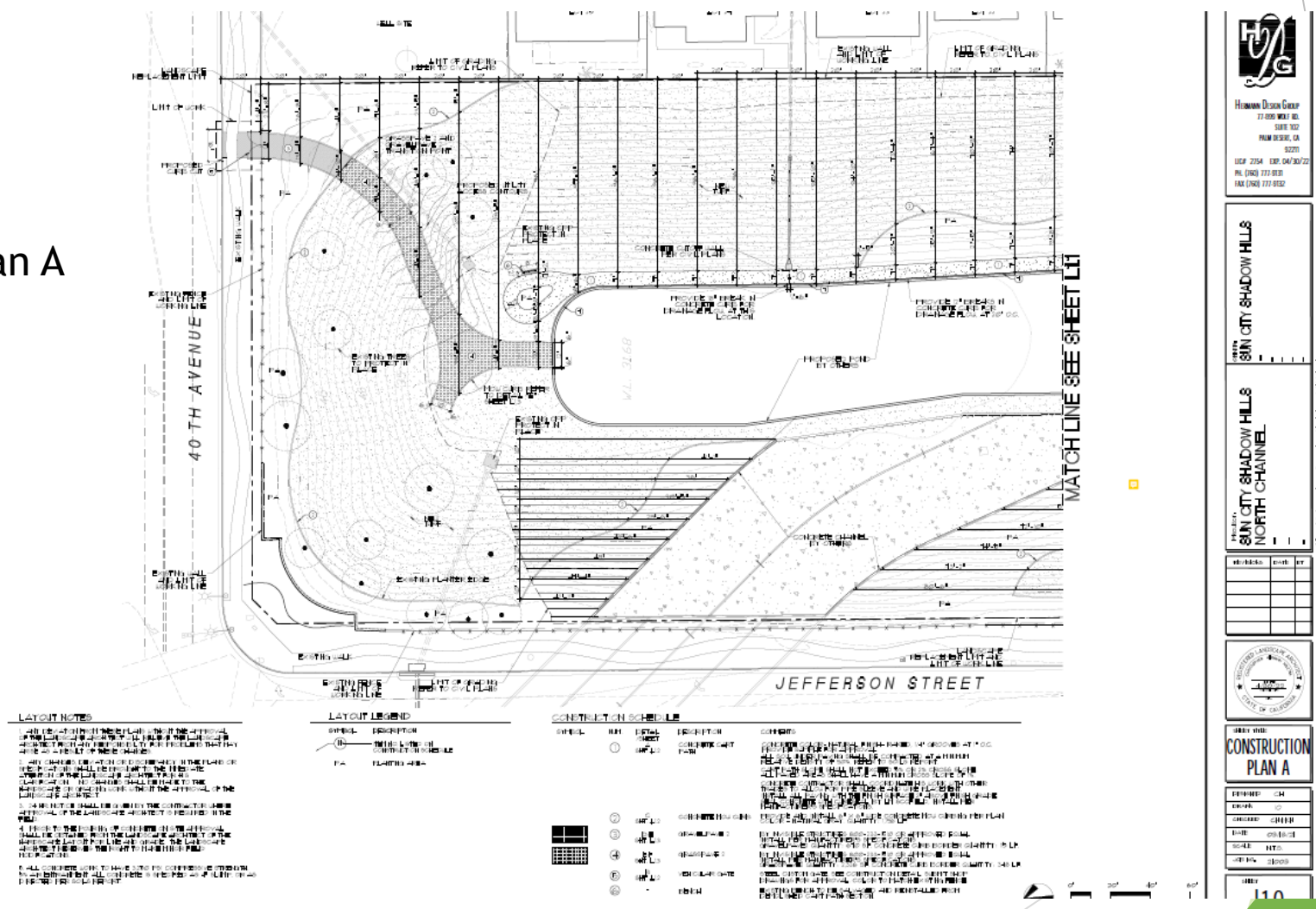
# SCSH Flood Control Project Update

- ▶ Hermann Design Landscape Replacement Plan
  - ▶ Design of new walkway with golf cart turnaround at north end of pond.
  - ▶ Design of replacement irrigation.
  - ▶ Turf, trees, shrubs and grasses species and planting locations
  - ▶ Maintenance equipment access ramp from Ave.40 and access gate.
- ▶ Plant Replacement Palette
  - ▶ 38 trees
  - ▶ 126 shrubs
  - ▶ 132,611 S.F. of Turf



# Hermann Design Group SCSH Landscape Plan

Construction Plan A



**HERMANN DESIGN GROUP**  
27000 WILLOW AVE.  
SUITE 100  
PALM DESERT, CA 92260  
TEL: (760) 777-9100  
FAX: (760) 777-9102

**SUN CITY SHADOW HILLS**  
NORTH CHANNEL

**CONSTRUCTION PLAN A**

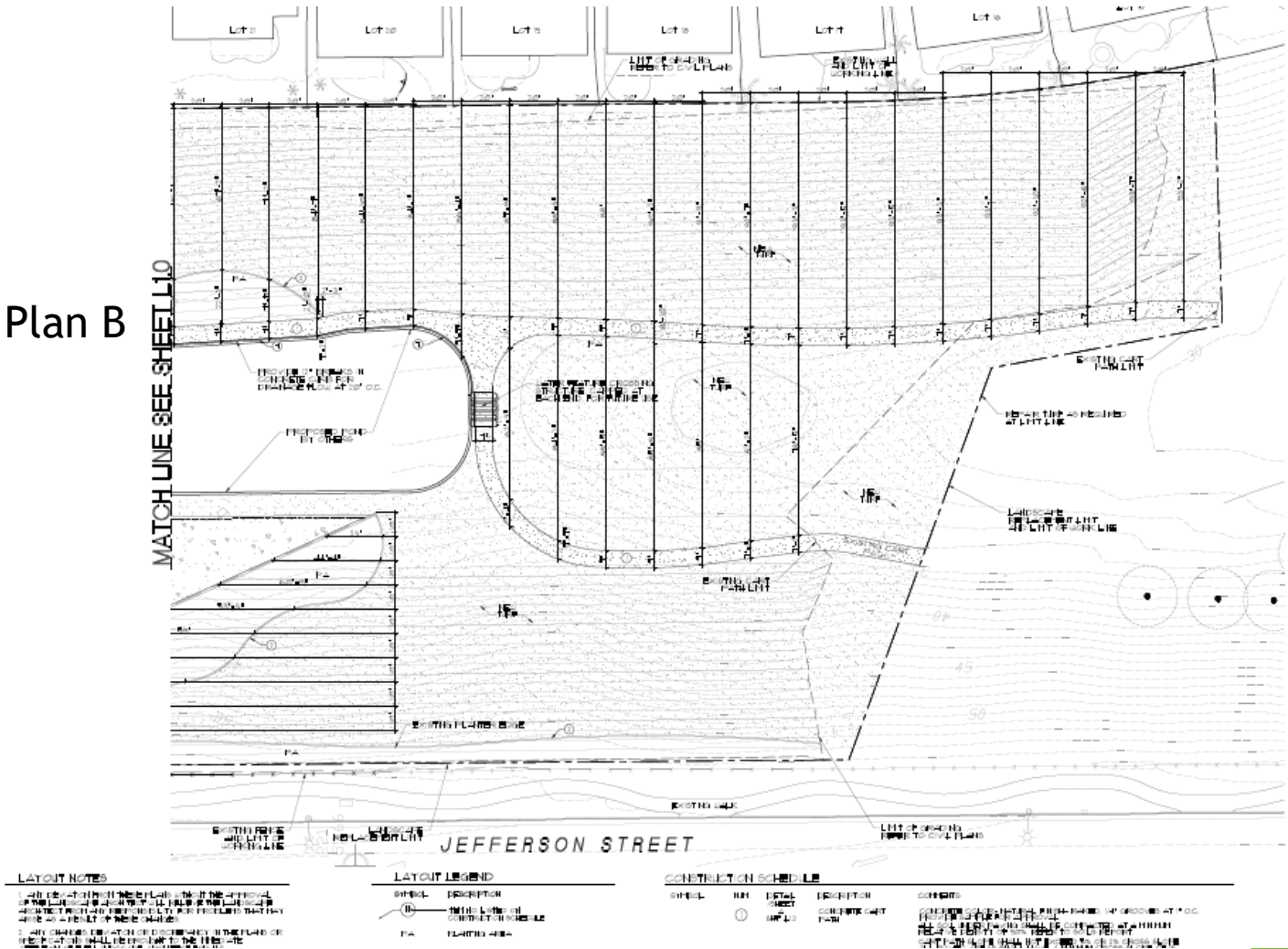
**DATE: 01/01/2020**

**SCALE: 1/8" = 1'-0"**

**110**

# Hermann Design Group SCSH Landscape Plan

Construction Plan B



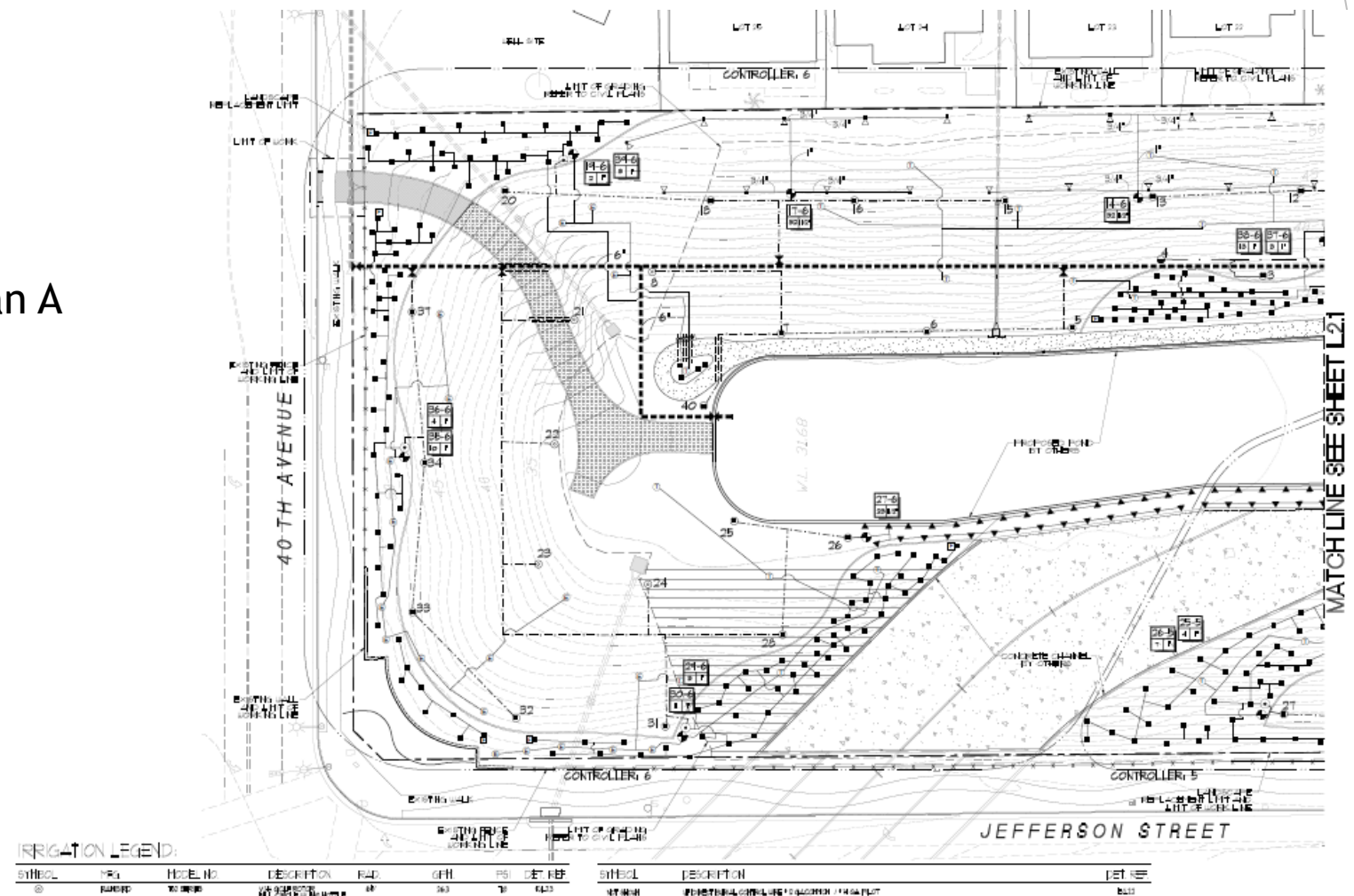
## Ave. 40 Access Gate





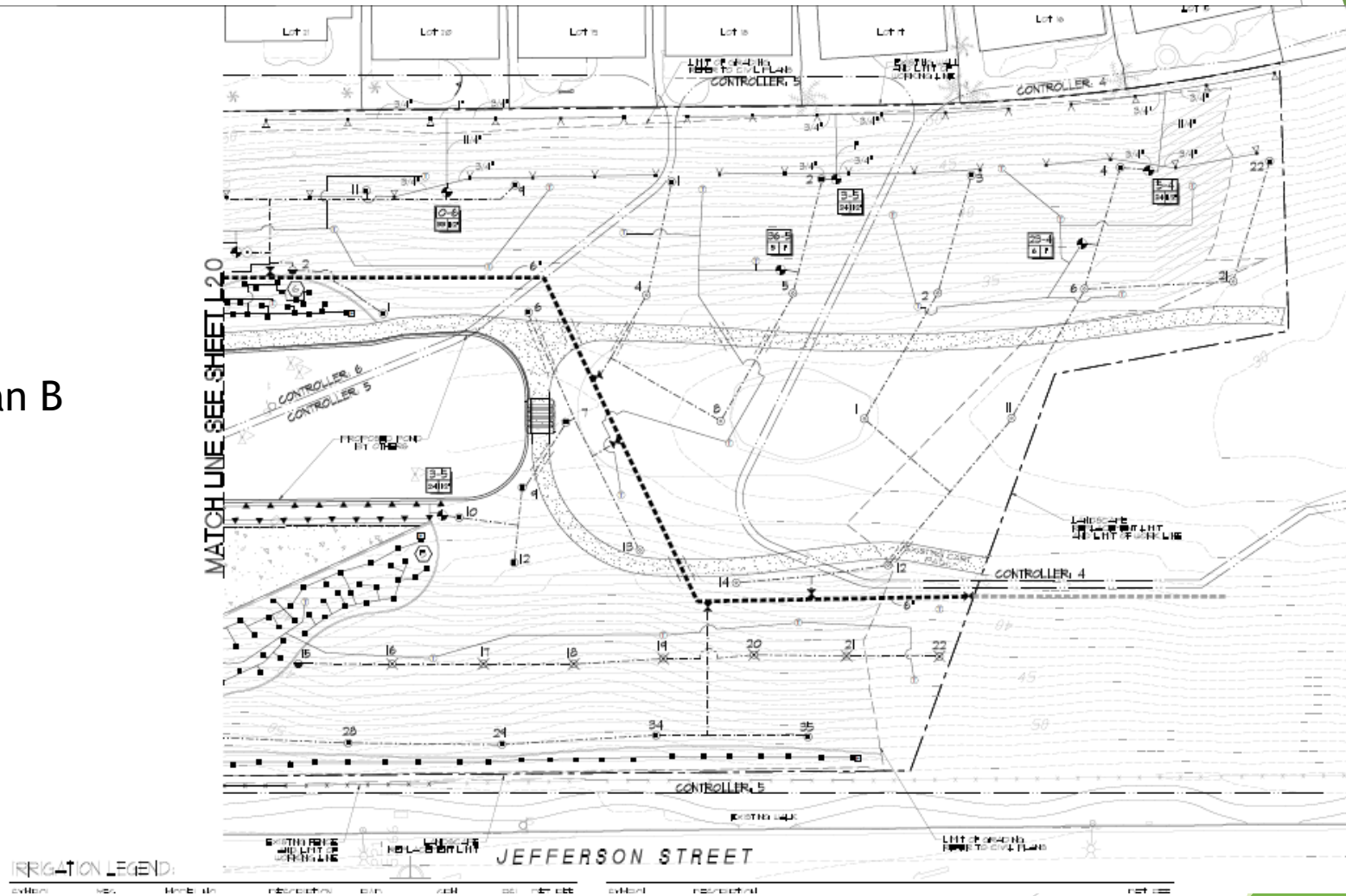
# Hermann Design Group SCSH Landscape Plan

Irrigation Plan A



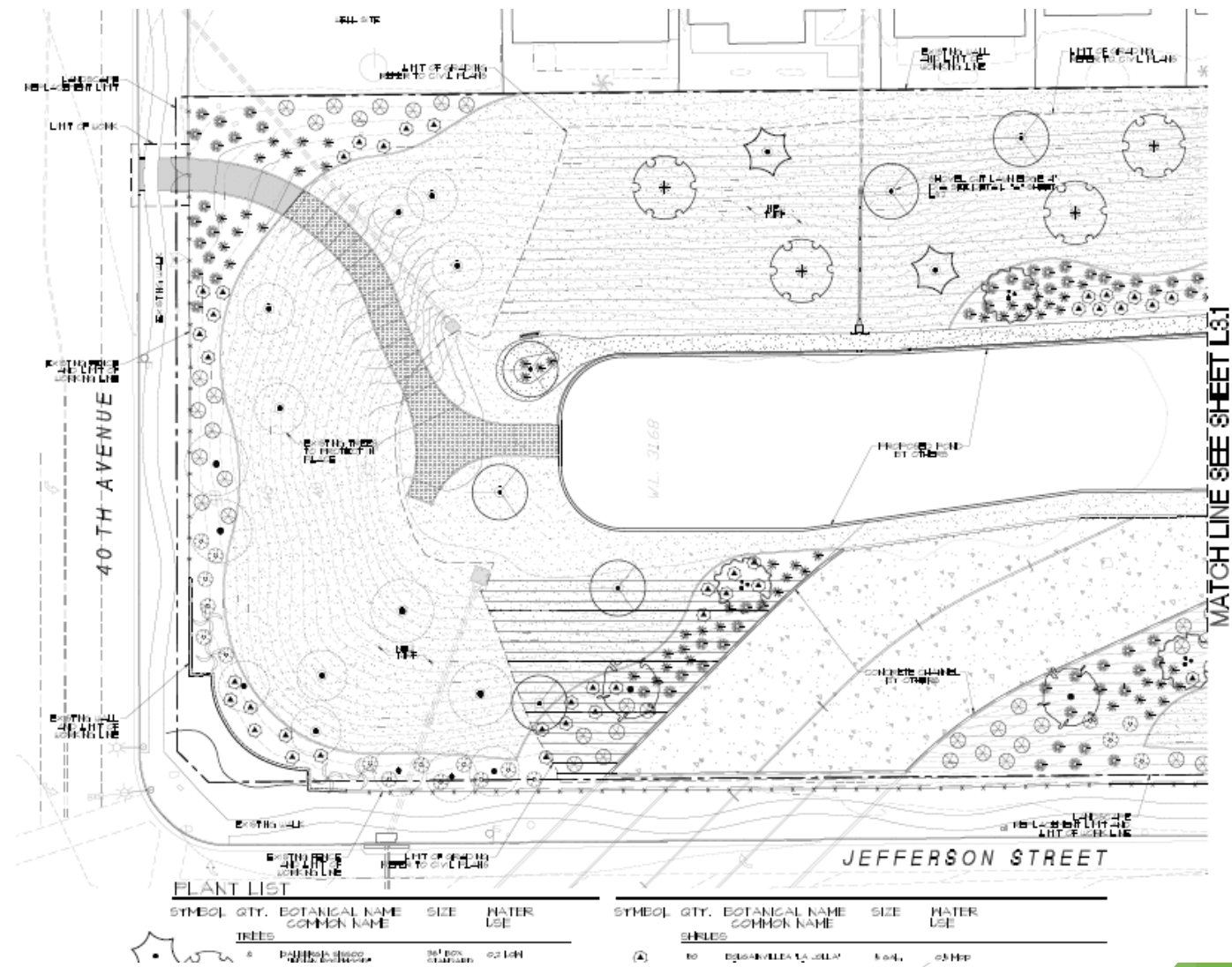
# Hermann Design Group SCSH Landscape Plan

## Irrigation Plan B



# Hermann Design Group SCSH Landscape Plan

Planting Plan A







## Pond 1 Outflow Stream Crossing Structure



# SCSH Flood Control Project Update

## Plant Palette

### ► Trees



8 *Dalbergia sissoo* - “Indian Rosewood”



11 *Fraxinus velutina* “Arizona Ash”

7/8/2021



# SCSH Flood Control Project Update

## Plant Palette

### ► Trees



5 *Parkinsonia praecox* “Palo Brea”  
Mesquite



2 *Prosopis glandulosa* “Honey  
Mesquite”

7/8/11



# SCSH Flood Control Project Update

## Plant Palette

### ► Trees



12 Tipuana tipu “Tipu Tree”

7/8/2021

# SCSH Flood Control Project Update

## Plant Palette

### ► Shrubs



50 Bougainvillea, La Jolla



26 Leucophyllum langmaniae. Lynn's  
Legacy

7/8/2021

# SCSH Flood Control Project Update

## Plant Palette

### ► Shrubs



50 Tecoma stans, Lydia



# SCSH Flood Control Project Update

## Plant Palette

### ► Grasses



Muhlenbergia lindheimeri, Autumn Glow



Muhlenbergia cupillaris, Regal Mist

7/8/2021

# Community Security and Plans

- ▶ Construction Phase
  - ▶ CVWD Contractor required to provide 24 hour, on site security force.
  - ▶ Security Company to be licensed and bonded.
  - ▶ Project Security Company to coordinate with SCSH security company and SCSH Safety Director.
  - ▶ Pedestrian access to construction site within SCSH to be prevented by 6' high chain link fencing.
  - ▶ Entrance into SCSH property through box drains to be prevented by fencing at perimeter of construction west of Jefferson Street.
- ▶ After construction completion
  - ▶ Access through box drains from outside SCSH prevented by metal fencing at inlet side of drains.
  - ▶ Fall hazard protection wrought iron fencing on top of perimeter wall on either side of box drains.
  - ▶ Pedestrian access into box drains prevented by TBD fencing at outlets.

# Potential Future Actions for Consideration

- ▶ Request CVWD Sediment Agreement (similar to SCPD).
- ▶ SCSHCA to hire engineer(s) to consult on the following:
  - ▶ Develop removal and clean up plan for flow of water into North Channel to Camino San Mateo.
  - ▶ Develop plan for the flow of water through the entire channel.
  - ▶ Decision on whether to reconstruct or eliminate pond 2 and provide increased area of turf
    - ▶ Reduce pond maintenance cost
  - ▶ Address mitigation of risk of flow-induced damage to Sun City Blvd. culverts and roadway
    - ▶ Preliminary engineering evaluation provided by Craftwater Engineering Inc. (Merrill Taylor P.E.)
  - ▶ Address mitigation of uncontrolled moderate flows
    - ▶ Above ground “stream water feature” to convey flows from overflow from Pond 1 to Pond 2 and 3
    - ▶ Decision on proceeding with conceptual design for stream water feature (Petrel Engineering)



## EASEMENT AND EXCHANGE AGREEMENT

DATED: August 25, 2004 by between the CVWD and Pulte Corp.

#12 Stormwater Drainage

G. Pages 10-11: “In order to connect the channel to the regional stormwater facilities, it may be necessary to reconstruct or modify the inlet in the vicinity of Jefferson Street and Avenue 40. Pulte and /or the Association agree that the District and /or its contractors shall have the right to do such work. On completion of the work, the **Association will be responsible for the operation, maintenance, repair, restoration, and reconstruction of the modified or reconstructed works** in the same manner as provided for in the original stormwater drainage area and facilities as provided for in the section.”

# Plans Forward

- ▶ Maintain contacts with CVWD and their Contractor during construction.
- ▶ Consult with CVWD contractor and DRM Staff on the design of Pond 1.
- ▶ Support DRM Staff in the monitoring of the progress of construction and adherence to approved specifications.
- ▶ Support DRM staff and Hermann Design Group in selection of replacement trees and shrubs.
- ▶ Keep the Camino Montecito residents and SCSH residents at large informed on the construction progress.
- ▶ Formulate recommendations to the Board of Directors for future flood control mitigations in the SCSH flood control basin, in anticipation of full-flow hookup (5 to 7 years).

# Whitewater Channel during storm Feb 14, 2019





# Whitewater channel after storm Feb 14, 2019



# SCSH Flood Control Project Update

- ▶ SCSH Contact Information:
  - ▶ Chris Stevens, Committee Chair [landscape@scshca.com](mailto:landscape@scshca.com)
  - ▶ Carol Townsend, Neighborhood Representative [CarolTownsend@Hotmail.com](mailto:CarolTownsend@Hotmail.com)
  - ▶ Sue Kester, Neighborhood Representative [smkester@cs.com](mailto:smkester@cs.com)
- ▶ Questions?