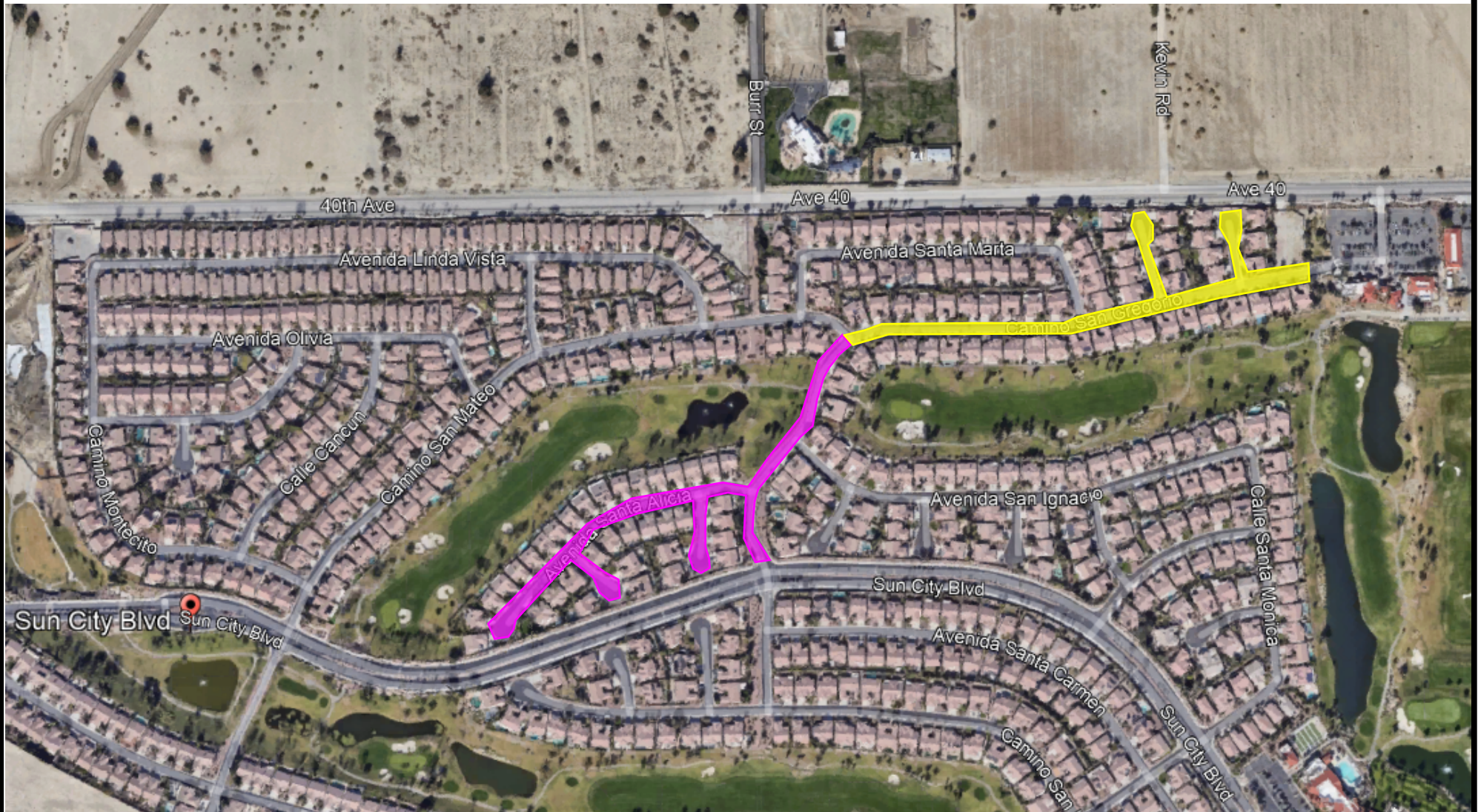


\*Note: Map is not to scale. Areas to be repaired are approximate and are subject to minor adjustments without notice.



WWW.NPGASPHALT.COM  
1354 Jet Way, Perris, CA 92571

Inland Empire: 951.940.0200 Tel  
951.940.9192 Fax  
Desert Division: 760.320.9600 Tel

### Asphalt Phasing Plan

Part 1 ~ Thursday 10/19/2023 - Friday 10/20/2023

Part 2 ~ Monday 10/30/2023 - Tuesday 10/31/2023

Sun City Shadow Hills  
80814 Sun City Blvd Indio,  
CA 92203